



A PRISON AND MINING FACILITY SITS NEXT TO A MOUNTAIN, ON A REMOTE PLANET FAR FROM EARTH.



WE FOUND THESE THINGS WHEN WE BLASTED A HOLE IN QUADRANT SIX. SEEMS THIS CAVE HAS BEEN HERE A WHILE. WHAT ARE THEY, DOC?

THIS SPECIES IS NASTY. AS LONG AS THERE ARE NO FEMALES AROUND, WE SHOULD BE OKAY. THESE BASTARDS SHOULD REMAIN DORMANT.



NOTIFY THE WARDEN ASAP. A GS'ER FROM EARTH LANDED THIS MORNING AND WE NEED TO STOP HIS TREATMENT BEFORE...



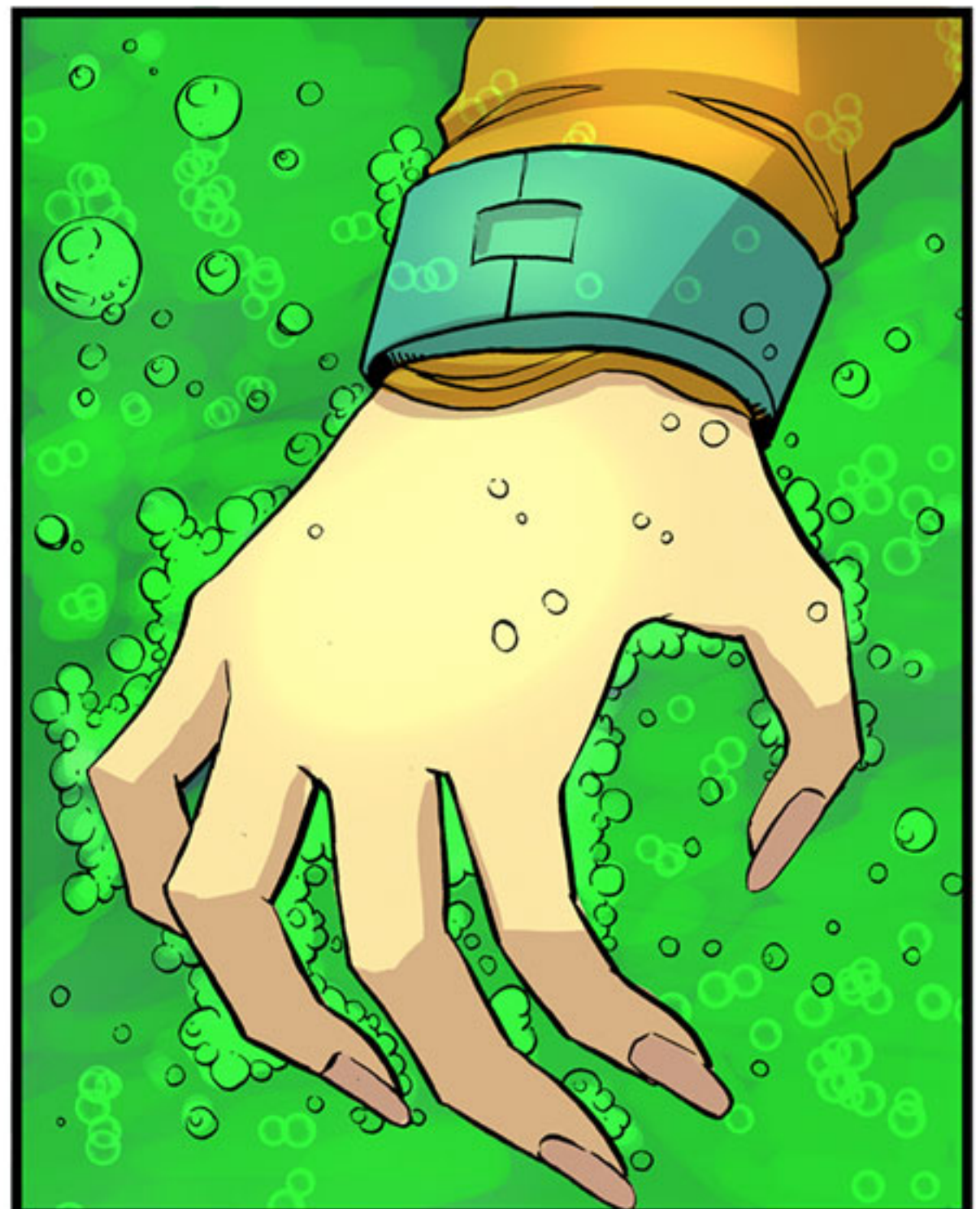
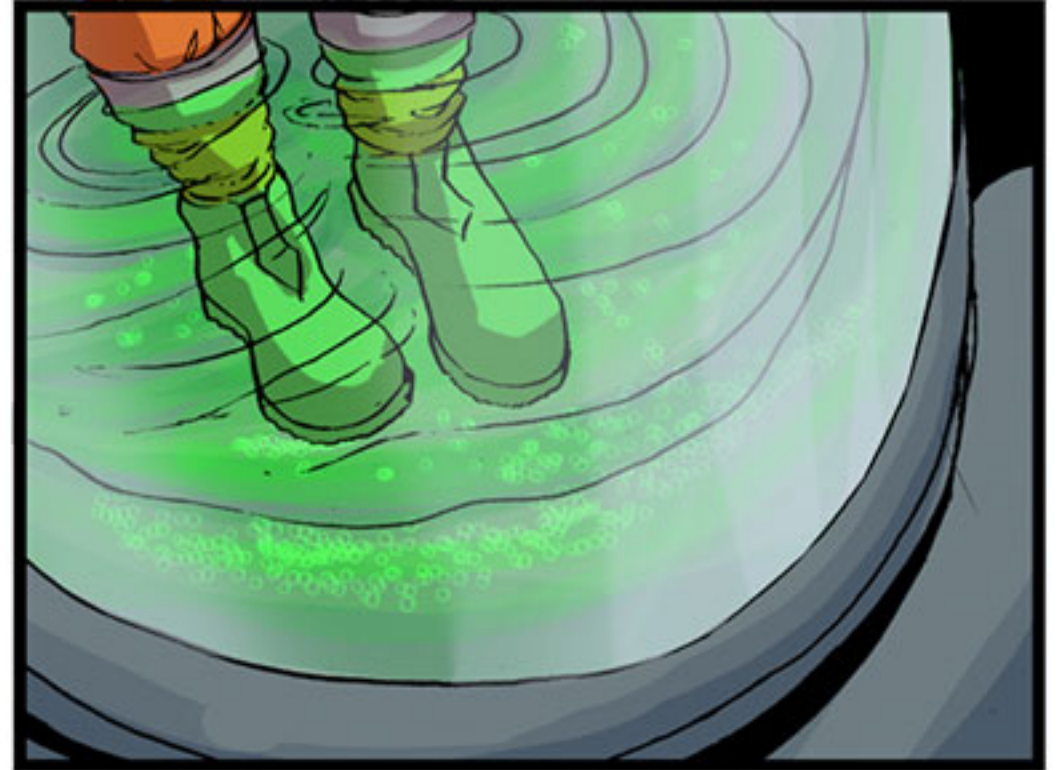
INSIDE THE PRISON.

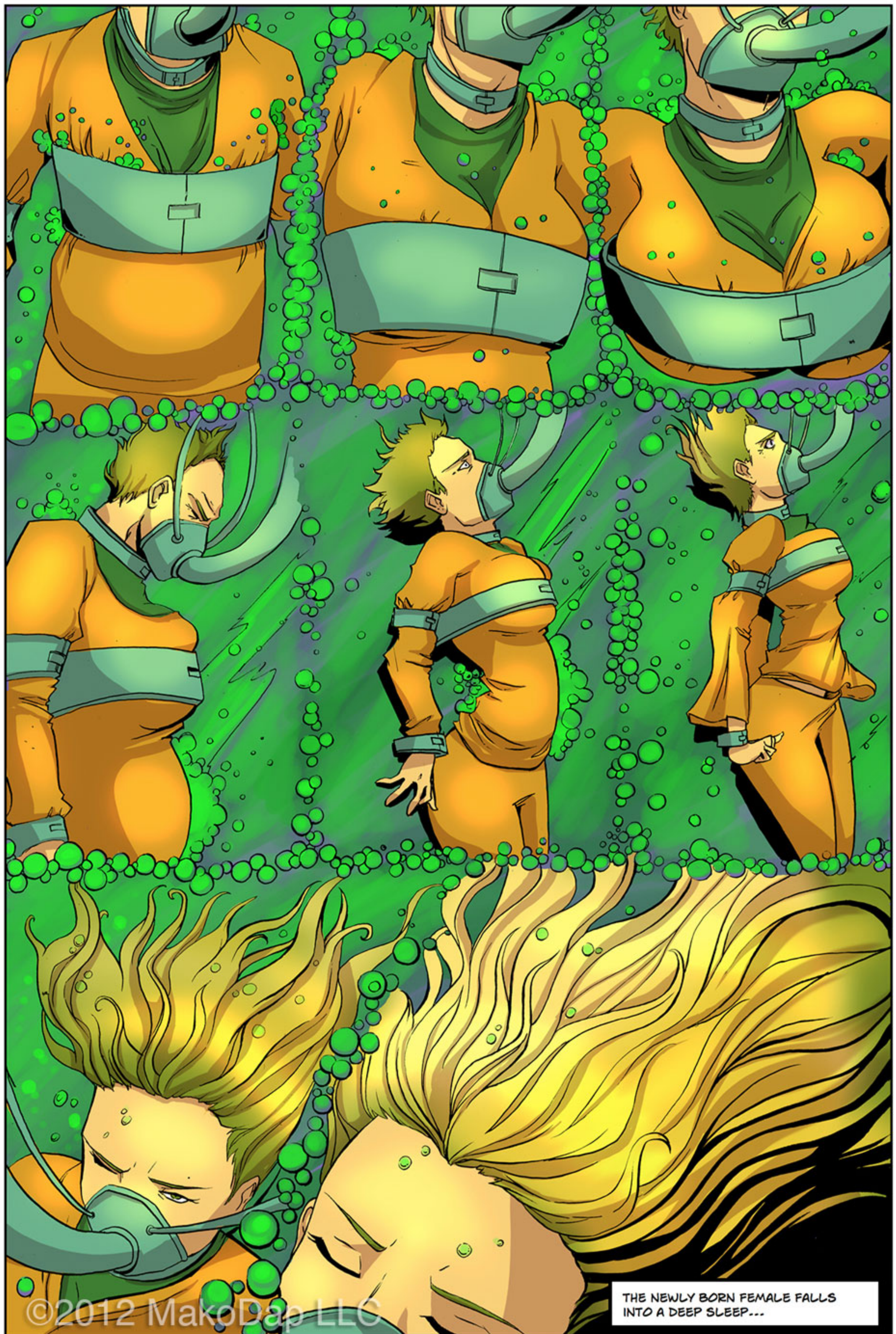
HOPE YOU GROW SOME BIG TITLES!!

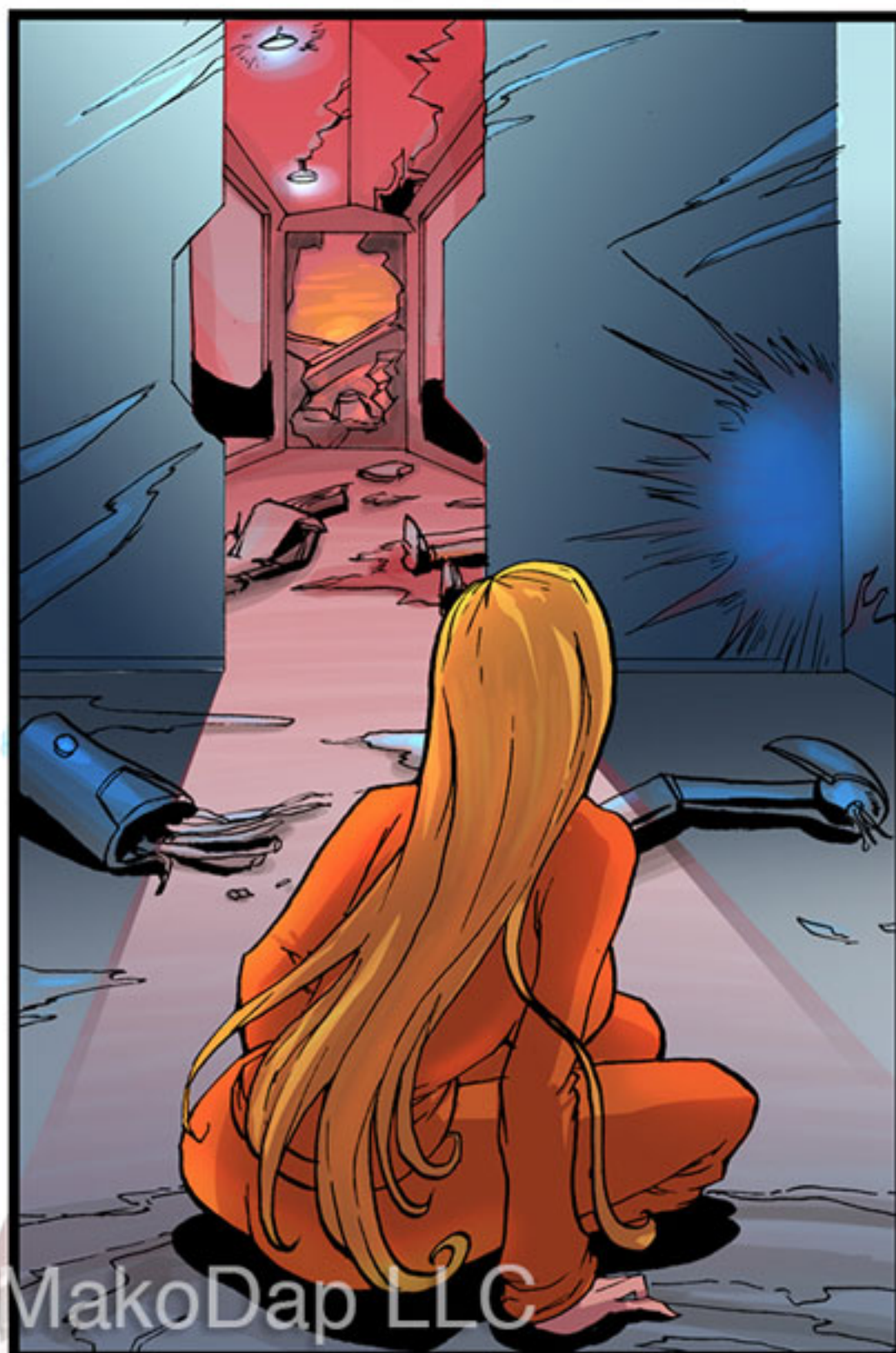
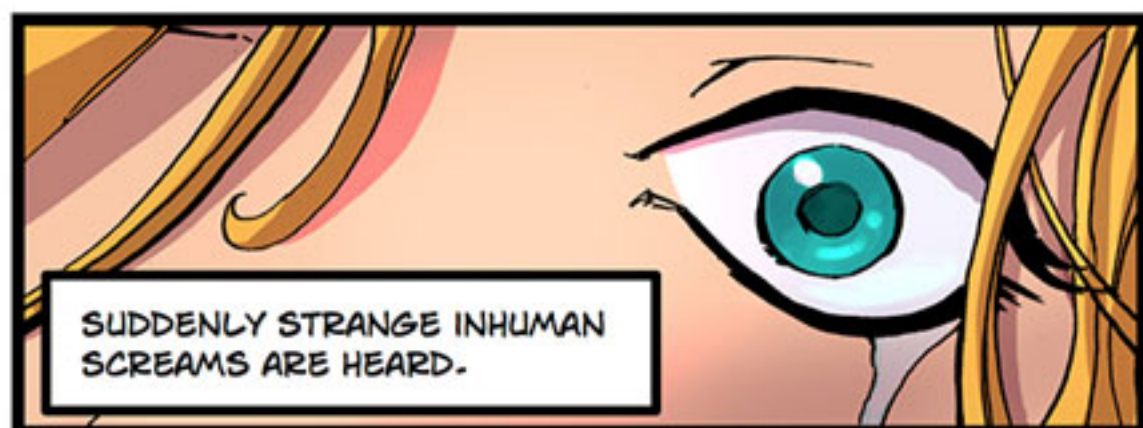
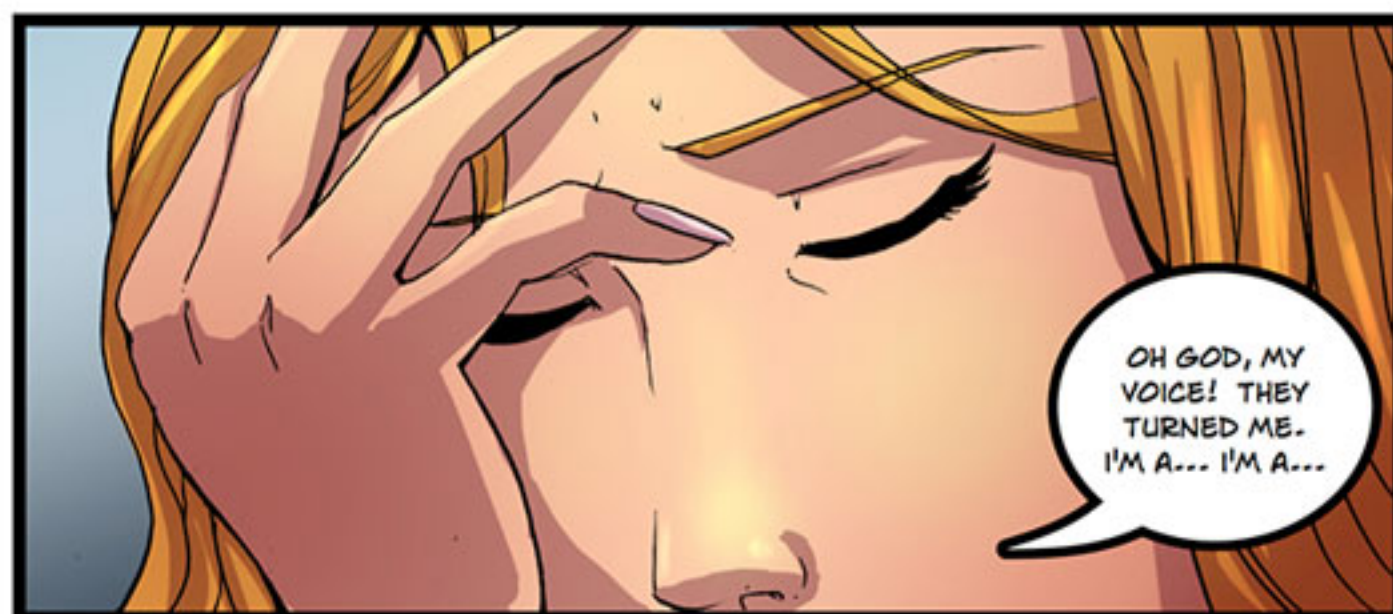
YOU'RE MINE WHEN YOU TURN, BITCH!!



PLEASE, I'M NOT SUPPOSED TO BE HERE. I WAS FRAMED!





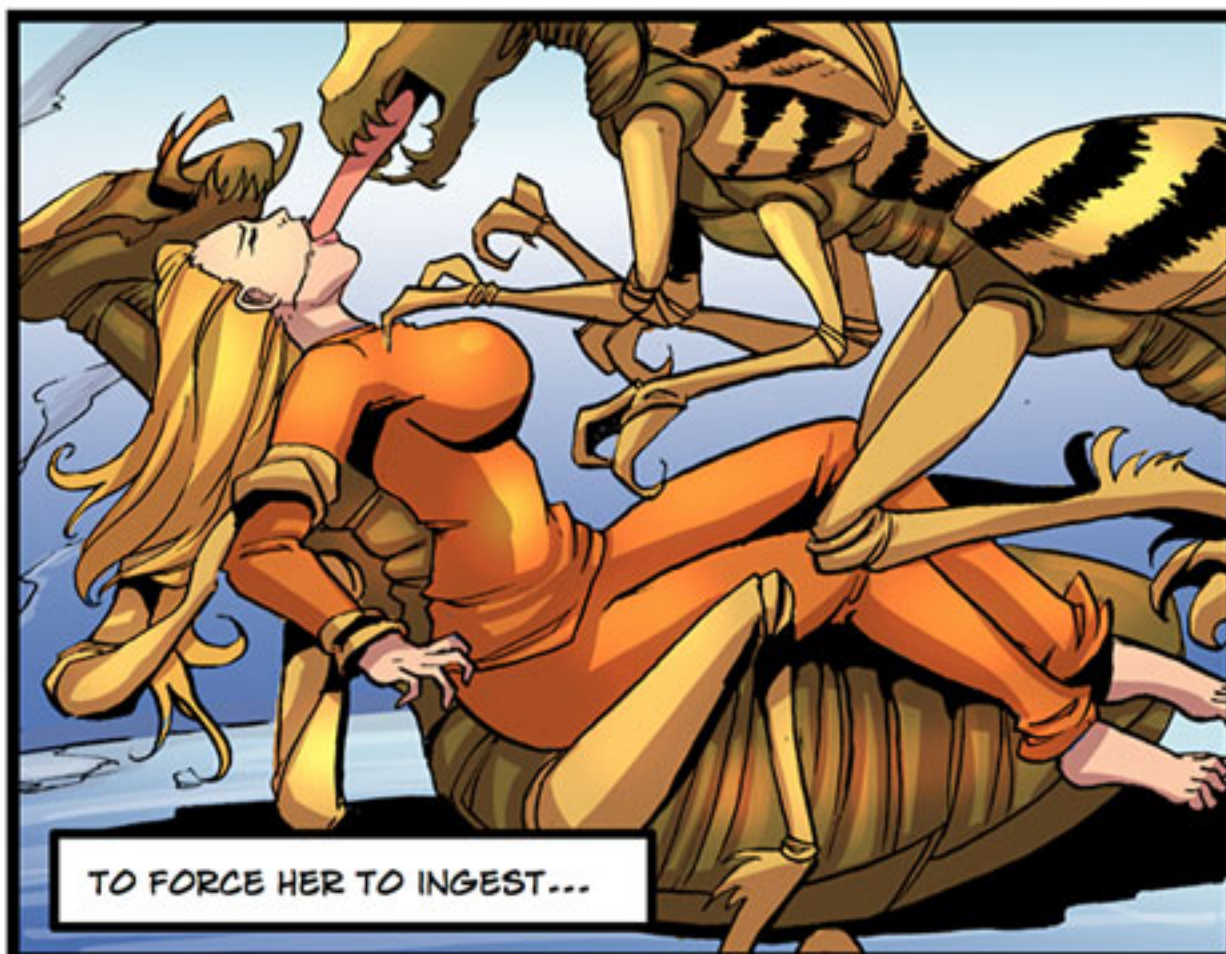




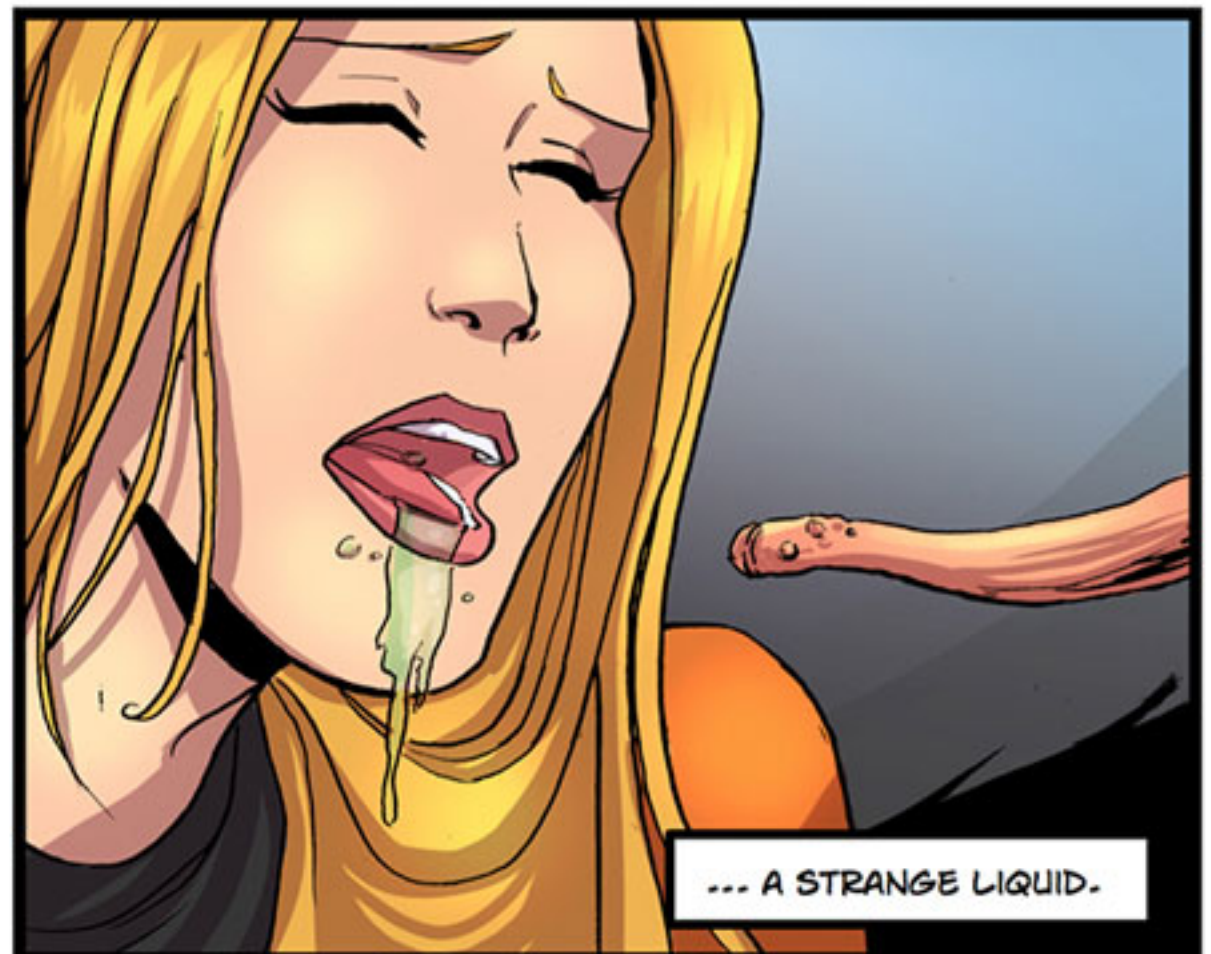
THE CREATURES CHASE THE HUMAN FEMALE...



...AND PIN HER DOWN.



TO FORCE HER TO INGEST...



... A STRANGE LIQUID.



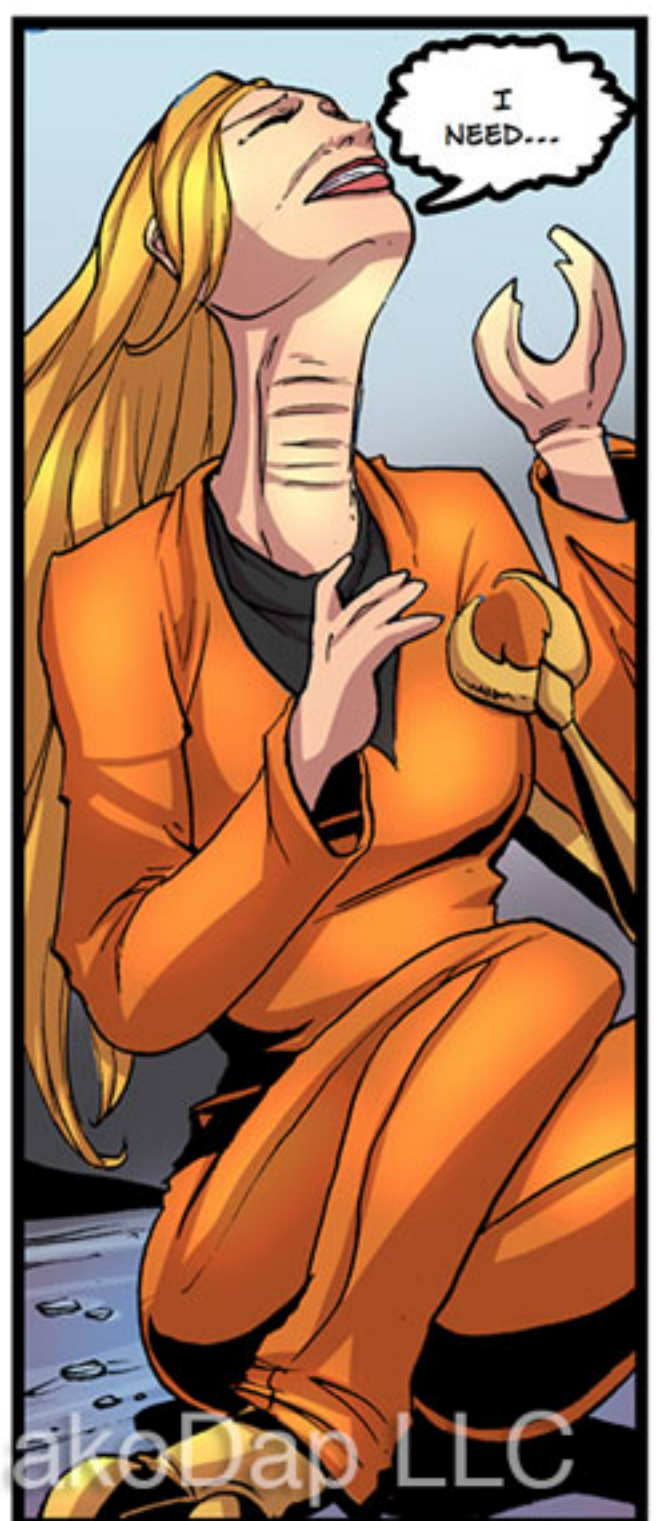
THEY BACK AWAY AND WAIT.



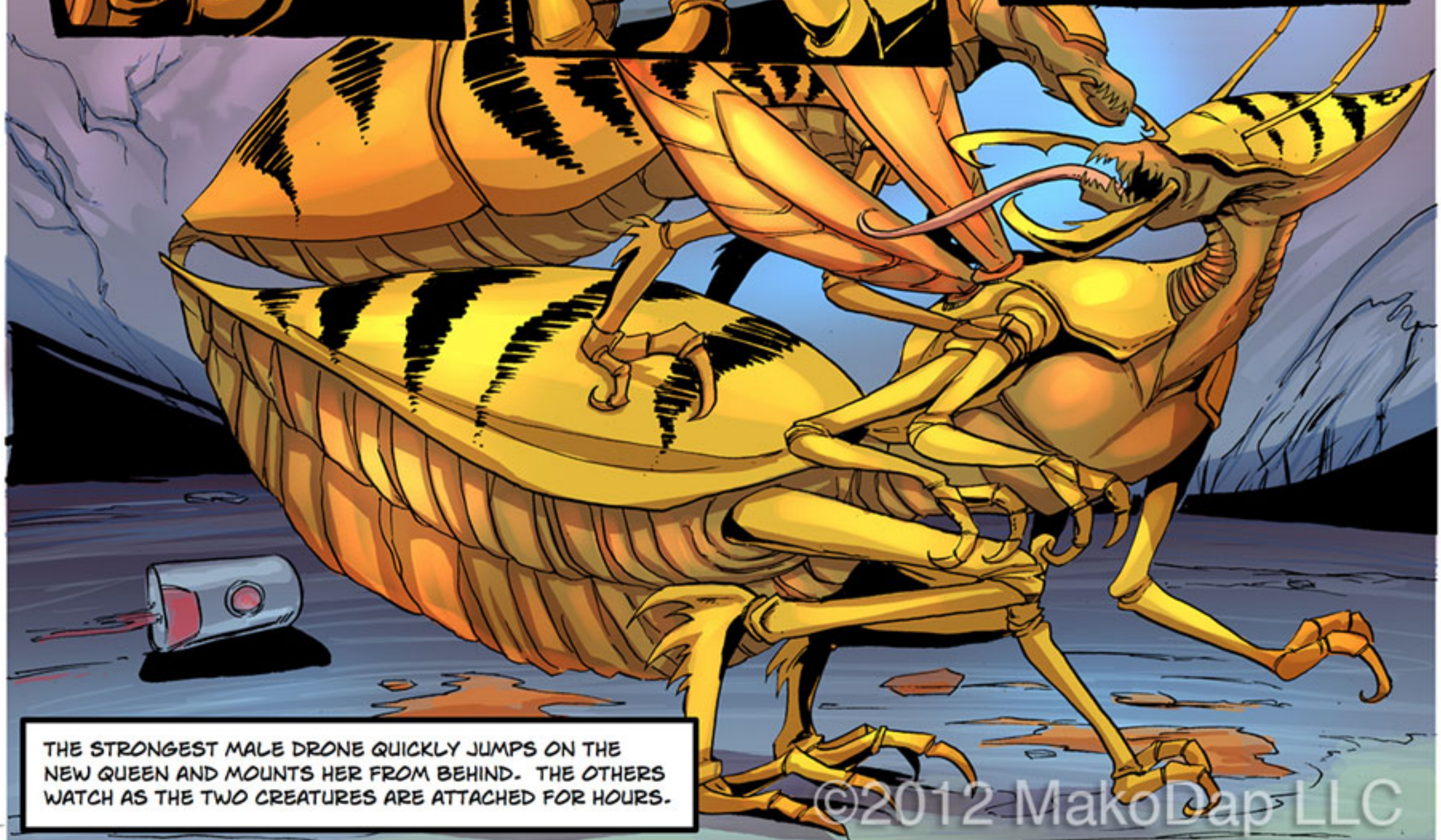
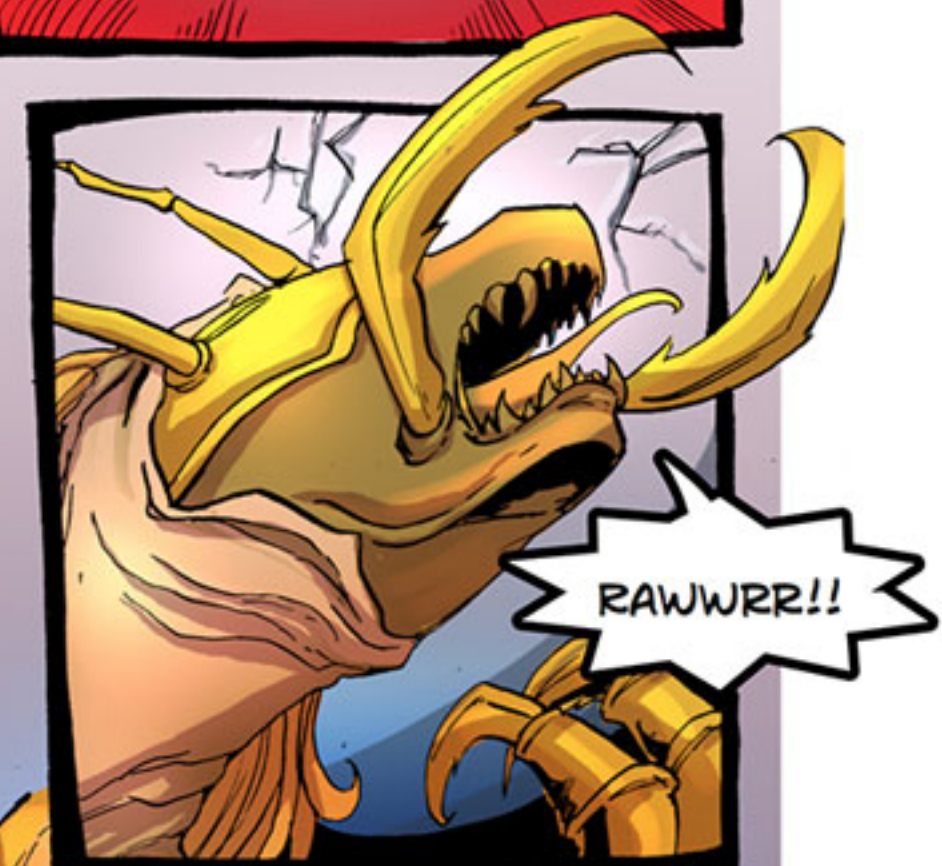
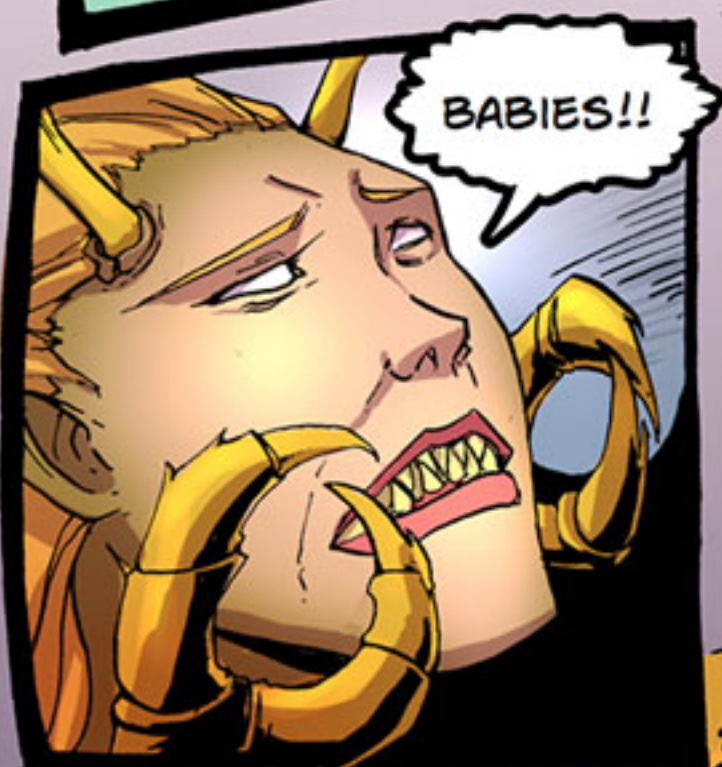
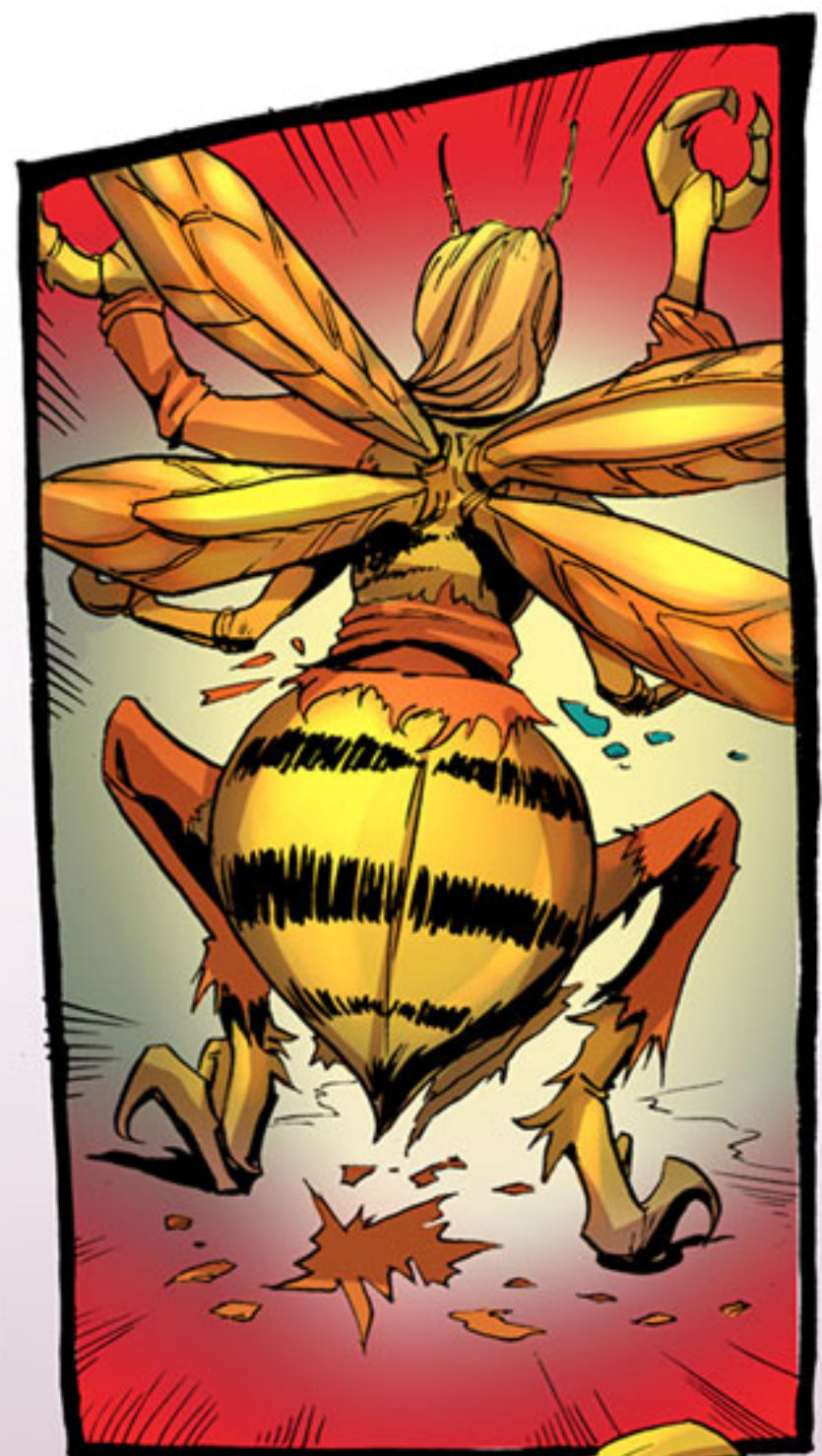
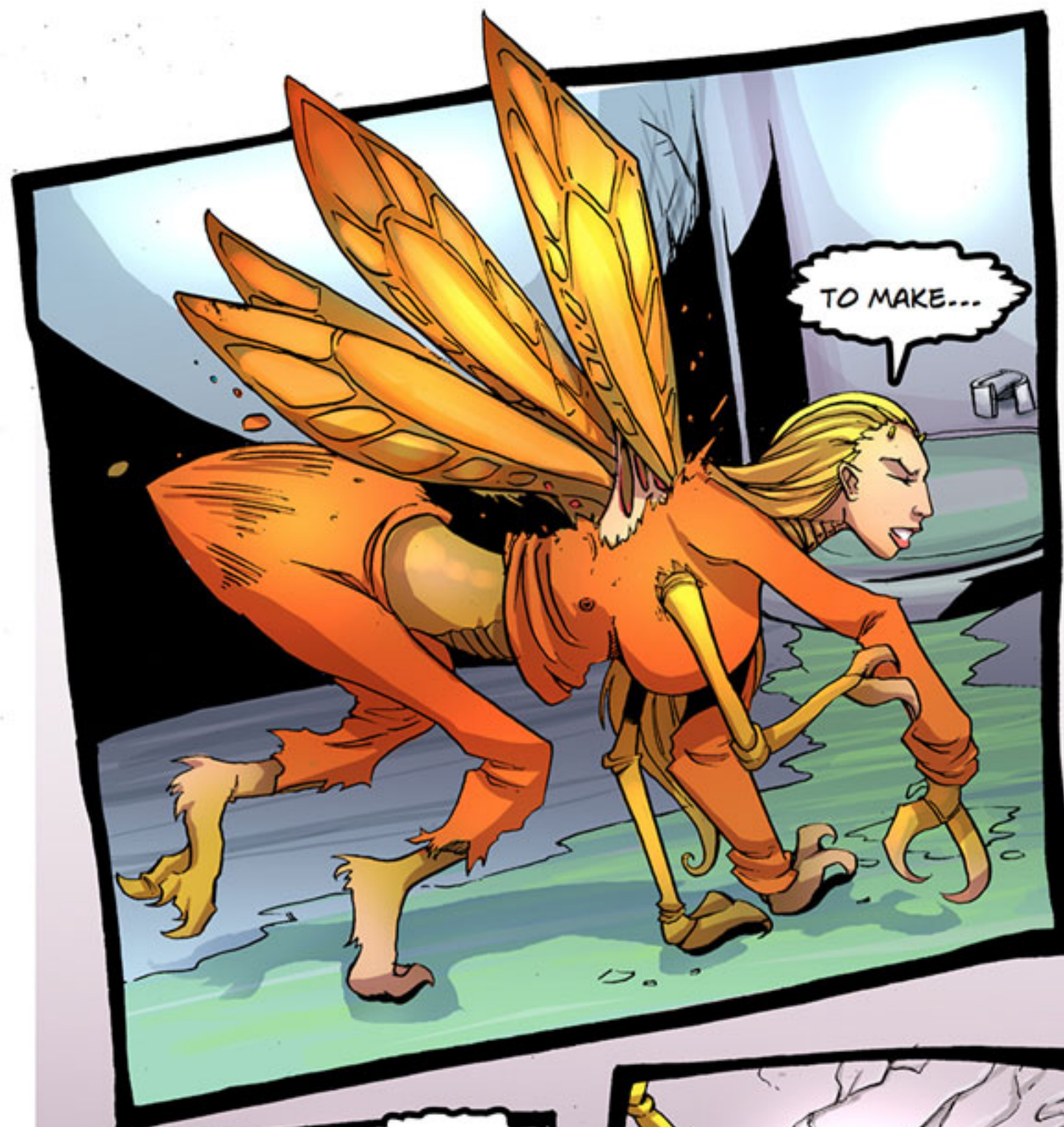
OH MY GOD
IT
HURTS



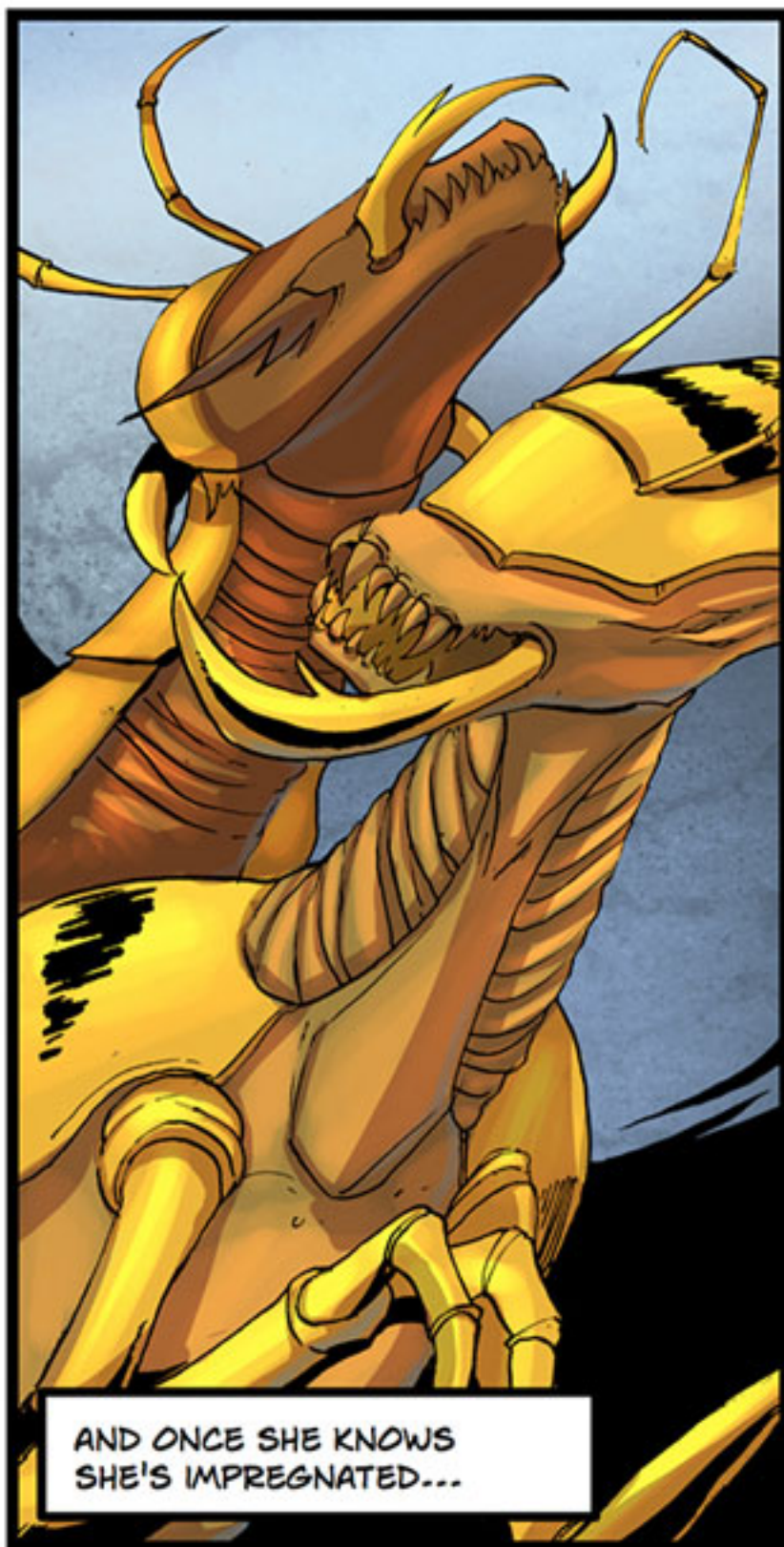
I
CAN'T...
THINK...



I
NEED...



THE STRONGEST MALE DRONE QUICKLY JUMPS ON THE NEW QUEEN AND MOUNTS HER FROM BEHIND. THE OTHERS WATCH AS THE TWO CREATURES ARE ATTACHED FOR HOURS.



AND ONCE SHE KNOWS
SHE'S IMPREGNATED...



...KILLS HER MATE.



RAWWR!!



THE MALE DRONES SCATTER
OUT OF THE FACILITY LIKE A
TRAIL OF ANTS.



AS THEIR NEW QUEEN FOLLOWS
THEM BACK TO THEIR HIVE, SO SHE
CAN BEGIN TO LAY HER EGGS.